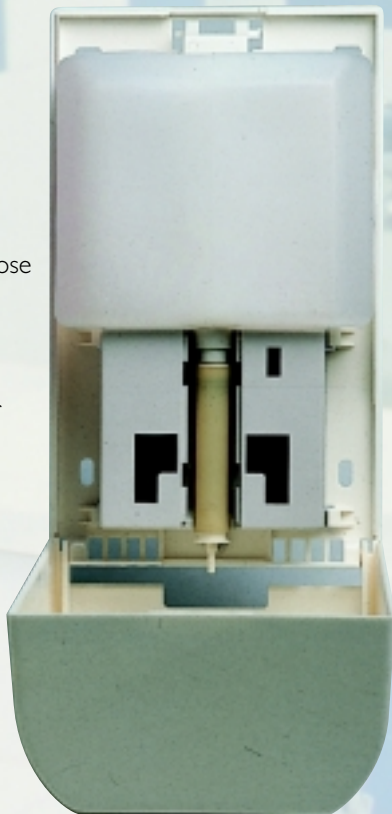


Quality Consumable Refills from Calfarme

CONSUMABLE REFILLS

CALFARME manufactures a wide range of quality consumable refills for filling into the refillable cartridge of both Press Type and Autosoap Dispensers:

- ECOBATH 3-in-1 Soap
- Moisturizing Shower Creme
- Enriched Lotion soap
- Antimicrobial Lotion Soap
- Instant Hand Sanitizer
- General Purpose Handsoap
- Heavy Duty Hand Cleaner
- Dishwashing Liquid



SOAP-IN-BAG

Both Press Type and Autosoap Dispensers can deliver liquid soap from the standard refillable cartridge or from a sealed 1000 ml **SOAP-IN-BAG** also available from CALFARME.

SOAP-IN-BAG comes with liquid soap in a strong plastic bag which is hermetically sealed, and is fitted with a tube and nozzle assembly.

SOAP-IN-BAG provides the extra hygiene assurance, and is disposable once the soap is used up.



Manufactured by Calfarme (Singapore) Pte Ltd
Blk 2 Defu Lane 10 #02-535 Singapore 539183.
Tel: 6283 2115 Fax: (65) 6285 4594

www.calfarme.com

CAT. NO: G0303 © 2002 CALFARME (SINGAPORE) PTE LTD



Practical, Well-Designed and Durable Soap Dispenser



AUTOSOAP DISPENSER

No touch, infrared sensor soap dispenser with manual option.

Models:

- **ASDW-950**
(White Cover)
- **ASDT-950**
(Smoke Grey
Transparent Cover)

PRESS TYPE SOAP DISPENSER

General purpose, manual press type soap dispenser

Models:

- **SDW-1000**
(White Cover)
- **SDT-1000**
(Smoke Grey
Transparent Cover)

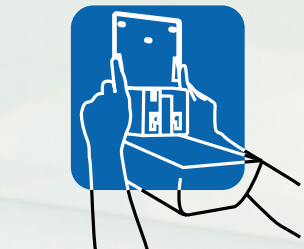
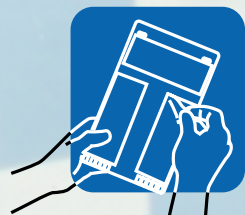


Installation Instructions



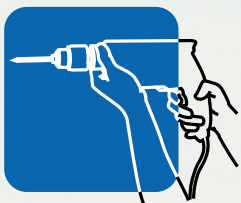
1. TAPE MOUNTING

- Be sure to clean wall surface well to remove grease and dirt prior to mounting.
- Remove protective backing from adhesive tape on back of Autosoap Dispenser.
- Carefully position Autosoap Dispenser and firmly press against the mounting surface for at least 10 seconds.
- Open cover and press directly on back plate for an additional 10 seconds.



2. PERMANENT SCREW MOUNTING (optional)

- Drill holes at a proper position on mounting surface.
- Insert wall plugs and use screws to secure Autosoap Dispenser permanently on the wall.



Operating Instructions

(installed at least 30cm above basin)

1. Open Autosoap Dispenser by inserting key opener into the top locking slot (part A) and pull cover forward. The cover is hinged as illustrated (part J). To clean the cover, simply remove from hinges and wash in warm water with a little of soap.
2. Insert 3 'C' cell batteries (part I) into the battery compartment on the right side of the detachable mechanism after removing battery cover.
3. Place a soap cartridge bottle or soap bag on top of the detachable mechanism and fix tube from soap cartridge or bag firmly in position before closing the cover.
4. Close cover which will press on the safety switch (part D) to activate the dispenser automatically.
5. Place hand beneath the dispenser and allow 1-2 seconds for response for each drop of soap.
6. If more soap is desired, repeat above action (5).

Infrared Sensor Battery Operated

(installed at least 30cm above basin)

A LOCKING SLOT

B REFILLABLE CARTRIDGE

C SENSITIVITY RANGE SWITCH
(Turn clockwise to prolong the detecting distance and counterclockwise to shorten)

D SAFETY SWITCH

E CYLINDER ARM

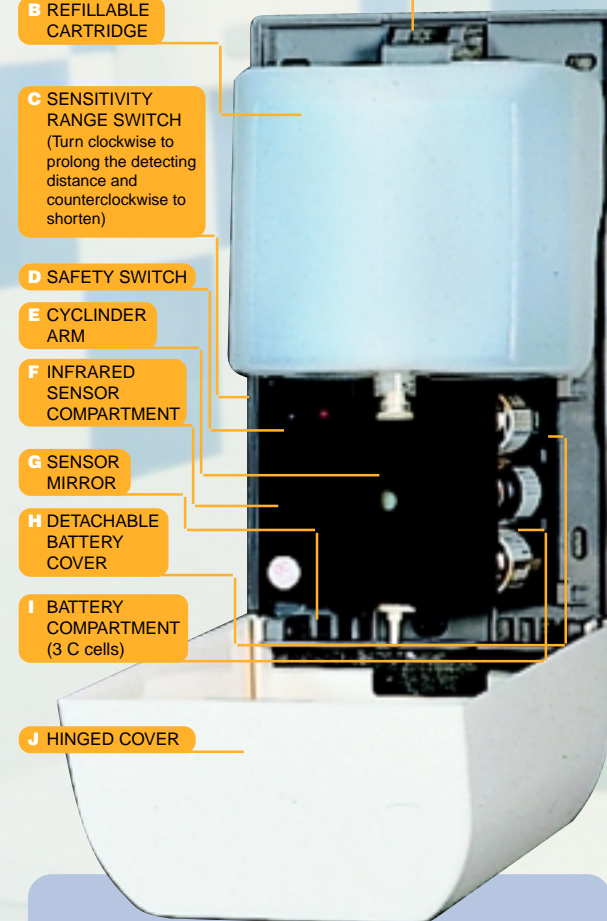
F INFRARED SENSOR COMPARTMENT

G SENSOR MIRROR

H DETACHABLE BATTERY COVER

I BATTERY COMPARTMENT (3 C cells)

J HINGED COVER



SPECIFICATIONS

External Dimension	: 24cm (H) x 14cm (W) x 9cm (D)
Max. Power Supply	: 3 "C" cell batteries
Max. Capacity	: 1000 ml
Detecting Distance	: Preset at 10cm, 2-20cm Adjustable
Response Time	: 1.2 seconds
Battery Life	: 2-3 months or 10,000 usage